



St Mary's Mag



We are collecting the following items for the Cathedral Archer Project, which is a charity that works with the homeless people in our city.

Each classroom has a box in which pupils can place donated items. This box will remain in class until the 23rd October.

As always, thank you in advance for your generosity, it is a very worthy cause and we know your support is much appreciated to them.

If you wish to donate money into the School Office, we will use all donated money to purchase sleeping bags.



HARVEST APPEAL 2ND - 23RD OCTOBER

We urgently need the following items:

Tinned food

Soups
Stewed steak
Fish
Meats
Ravioli
Spaghetti
Baked beans
Meatballs
Tomatoes
Vegetables
Desserts
Fruit

Other food

Cereals
Sugar
Tea bags
Coffee
Biscuits
Pot noodles
Mug shots
Pot pasta
Cup a soups
Orange juice
Squash
Snacks
Rice

Toiletries

Razors
Shaving foam
Toothbrushes
Shower gel
Shampoo
Conditioner
Spray deodorants
Washing powder

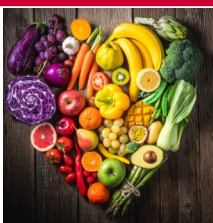
No Thanks

Out of date food
Part used food
Part used toiletries
Roll on deodorant
Jumble
Electrical goods
Pasta

We also need volunteers to help sort out the donations, please call if you have any spare time.

Sleeping bags, sock, hats and gloves are welcome!

Key Stage 2 Snack



A polite reminder that we do allow pupils in Key Stage 2 to bring snack for morning break, but it **must be an item of fruit or vegetables**. So far this week we have had to talk to pupils who have brought in crisps, sweets, crackers, biscuits and breakfast bars. Thank you for your understanding.

Building Work

You may have noticed building work that is happening in the Key Stage 2 yard. We have invested in a large piece of climbing equipment to ensure playtimes and lunchtimes are as fun and active as possible. We have also invested in some planter benches, for when all the climbing gets too much, pupils can chill out and read a book. We expect the work to be completed by next week.



Church Service

Year One to Year 6 will be attending St Mary's Church on Monday 3rd October for a Harvest Service.


The service will start at 9:30am and parents and carers are most welcome to attend.

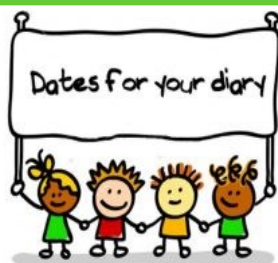


BRAG MAG

With so many superstars —
we just have to show them off!

Merit Points

Team	Points
	3rd
	4th
	2nd
	1st



27.9– FS Math Workshop 4pm-5pm

3.10– Harvest service at St Mary's Church

7.10– Individual Photos

17.10– Parent's evenings

18.10– Flu Vaccinations

19.10– Parent's evenings

24.10-28.10– Half Term

31.10.– Inset day– School Closed

1.11– School reopens

2.11– Y5 visit to Barnsley Museum

19.12– Christmas Holidays



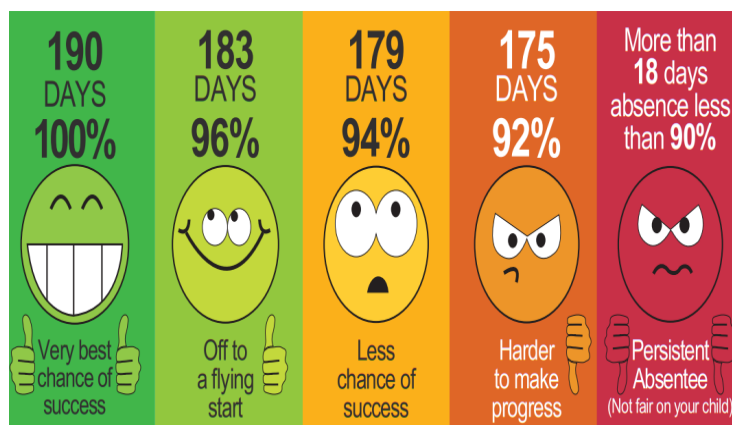
Attendance

W/B: 19/9/22

Whole School: **95.1%**



Reception	92%
Year 1	93.8%
Year 2	96.6%
Year 3	97.6%
Year 4	95.5%
Year 5	93.6%
<i>1st</i> Year 6 <i>1st</i>	100%



Pupil of the Week

Awarded to: Maisie Y3

For: her wonderful explanation of the concept she was learning in literacy. Well done Maisie – you made me feel very welcome in class and I love how confidently you shared your learning!

Miss Miller

THANK YOU!